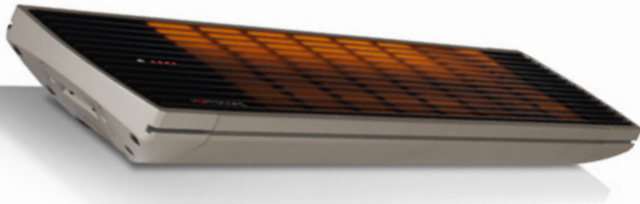


HEATSCOPE® SPOT

RRP recommended retail prices, incl. 21% VAT – All prices excl. shipping and handling costs ex works Sauerlach / Germany.

HEATSCOPE® SPOT

black resp. white fin front screen · titan resp. white coated aluminium body · energy efficient twin carbon heating elements with satin surface · patent pending reflector heating system with air conditioned back · incl. accessories for wall or ceiling mounting · visible light: < 600 lux · max. heating output in < 15 sec. · mounting accessories for wall or ceiling mounting included (see below)



HEATSCOPE® SPOT – manual regulation, 4-core cable

SPECIFICATIONS: ON/OFF + two manual switchable power stages (100% or 50%, for use with smart home systems or external switch)

| Art.-No. | Color | Power | Weight | Dimensions (incl. bracket) | Price |
|------------------|-----------------------------|--------|--------|----------------------------|----------|
| MHS-SM1600BK.100 | front: black body: titan | 1600 W | 4,0 kg | 670 x 184 x 82 mm | 559,00 € |
| MHS-SM2200BK.100 | | 2200 W | 4,5 kg | 810 x 184 x 82 mm | 599,00 € |
| MHS-SM2800BK.100 | | 2800 W | 5,0 kg | 890 x 184 x 82 mm | 640,00 € |
| MHS-SM1600WT.100 | front: white body: white | 1600 W | 4,0 kg | 670 x 184 x 82 mm | 559,00 € |
| MHS-SM2200WT.100 | | 2200 W | 4,5 kg | 810 x 184 x 82 mm | 599,00 € |
| MHS-SM2800WT.100 | | 2800 W | 5,0 kg | 890 x 184 x 82 mm | 640,00 € |

HEATSCOPE® SPOT – 2 step power stage regulation, remote-controlled, 3-core cable

SPECIFICATIONS: ON/OFF + two switchable remote-controlled power stages (100%, 50%), incl. **IR- remote control**



| Art.-No. | Color | Power | Weight | Dimensions (incl. bracket) | Price |
|------------------|-----------------------------|--------|--------|----------------------------|----------|
| MHS-SP1600BK.100 | front: black body: titan | 1600 W | 4,0 kg | 670 x 184 x 82 mm | 630,00 € |
| MHS-SP2200BK.100 | | 2200 W | 4,5 kg | 810 x 184 x 82 mm | 701,00 € |
| MHS-SP2800BK.100 | | 2800 W | 5,0 kg | 890 x 184 x 82 mm | 742,00 € |
| MHS-SP1600WT.100 | front: white body: white | 1600 W | 4,0 kg | 670 x 184 x 82 mm | 630,00 € |
| MHS-SP2200WT.100 | | 2200 W | 4,5 kg | 810 x 184 x 82 mm | 701,00 € |
| MHS-SP2800WT.100 | | 2800 W | 5,0 kg | 890 x 184 x 82 mm | 742,00 € |

HEATSCOPE® MOUNTING ACCESSORIES – for wall or ceiling mounting included

INCLUDED



assembled mounting equipment: max. height 120 mm (incl. mounting bracket)

=



mounting brackets height approx. 9 mm

+



hinge joints for stepless alignment of the HEATSCOPE® height max. 100 mm

+



oval mounting plate height approx. 11 mm

(+)



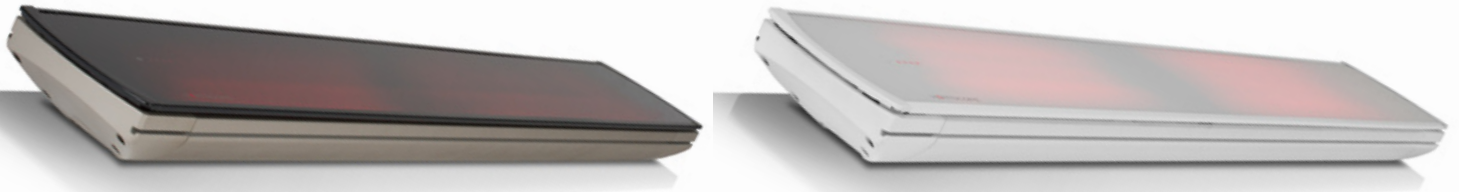
fixing rod / distance element for ceiling mounting height 60 mm

HEATSCOPE® VISION

RRP recommended retail prices, incl. 21% VAT – All prices excl. shipping and handling costs ex works Sauerlach / Germany.

HEATSCOPE® VISION

black resp. white industrial ceramic glass front screen (NEXTREMA® by SCHOTT®) · titan resp. white coated aluminium body · energy efficient twin carbon heating elements with satin surface · patent pending reflector heating system with air conditioned back · ON/OFF + two switchable power stages (100%, 50%) via IR-remote control · visible light: < 300 lux · max. heating output in < 30 sec. · mounting accessories for wall or ceiling mounting included (see below)



HEATSCOPE® VISION – manual regulation, 4-core cable

SPECIFICATIONS: ON/OFF + two manual switchable power stages (100% or 50%, for use with smart home systems or external switch)

| Art.-No. | Color | Power | Weight | Dimensions (incl. bracket) | Price |
|------------------|-----------------------------|--------|---------|----------------------------|------------|
| MHS-VE1600BK.100 | front: black body: titan | 1600 W | 6,0 kg | 810 x 184 x 90 mm | 874,00 € |
| MHS-VE2200BK.100 | | 2200 W | 8,0 kg | 1160 x 184 x 90 mm | 1.087,00 € |
| MHS-VE3200BK.100 | | 3200 W | 11,0 kg | 1660 x 184 x 90 mm | 1.321,00 € |
| MHS-VE1600WT.100 | front: white body: white | 1600 W | 6,0 kg | 810 x 184 x 90 mm | 1.057,00 € |
| MHS-VE2200WT.100 | | 2200 W | 8,0 kg | 1160 x 184 x 90 mm | 1.382,00 € |
| MHS-VE3200WT.100 | | 3200 W | 11,0 kg | 1660 x 184 x 90 mm | 1.657,00 € |

HEATSCOPE® VISION – 2 step power stage regulation, remote-controlled, 3-core cable

SPECIFICATIONS: ON/OFF + two switchable remote-controlled power stages (100%, 50%), incl. **IR- remote control**



| Art.-No. | Color | Power | Weight | Dimensions (incl. bracket) | Price |
|------------------|-----------------------------|--------|---------|----------------------------|------------|
| MHS-VT1600BK.100 | front: black body: titan | 1600 W | 6,0 kg | 810 x 184 x 90 mm | 965,00 € |
| MHS-VT2200BK.100 | | 2200 W | 8,0 kg | 1160 x 184 x 90 mm | 1.179,00 € |
| MHS-VT3200BK.100 | | 3200 W | 11,0 kg | 1660 x 184 x 90 mm | 1.382,00 € |
| MHS-VT1600WT.100 | front: white body: white | 1600 W | 6,0 kg | 810 x 184 x 90 mm | 1.199,00 € |
| MHS-VT2200WT.100 | | 2200 W | 8,0 kg | 1160 x 184 x 90 mm | 1.454,00 € |
| MHS-VT3200WT.100 | | 3200 W | 11,0 kg | 1660 x 184 x 90 mm | 1.769,00 € |

HEATSCOPE® MOUNTING ACCESSORIES – for wall or ceiling mounting included

INCLUDED



assembled mounting equipment: max. height 120 mm (incl. mounting bracket)

=



mounting brackets height approx. 9 mm

+



hinge joints for stepless alignment of the HEATSCOPE® height max. 100 mm

+



oval mounting plate height approx. 11 mm

(+)



fixing rod / distance element for ceiling mounting height 60 mm

HEATSCOPE® ACCESSORIES

RRP recommended retail prices, incl. 21% VAT – All prices excl. shipping and handling costs ex works Sauerlach / Germany.

2-step Infrared Remot Control Unit (ON/OFF, 100%, 50%)

| Art.-No. | Fitting Models | Color | Measurements | Weight | Price/Piece |
|------------------|--------------------------|-------|-----------------|--------------------------|-------------|
| MHS-VS-FBHS-BK-S | all MHS-SP all MHS-VT | Black | 173 x 29 x 18mm | 0,05 kg (incl. Batt.) | 60,00 € |



Dual Fixing Rod to adjust two heaters (excl. mounting equipment, which is part of delivery of every heater)

| Art.-No. | Fitting Models | Color | Measurements | Weight | Price/Pair |
|------------|--|-----------------|--------------------------------------|---------|------------|
| MHS-VS-DOP | all MHS-SM, MHS-SP all MHS-VE, MHS-VT | Stainless Steel | 180 x 50 x 24 mm Thickness: 2,5mm | 0,18 kg | 71,00 € |



Weather Shield (mandatory for installation in uncovered areas without roof or similar)

| Art.-No. | Fitting Models | Color | Measurements | Weight | Price/Piece |
|--------------|---|-----------------------------|--------------|---------|-------------|
| MHS-VS-WS1-2 | MHS-SM1600, MHS-SP1600 | Corpus: Stainless Steel* | 720 mm | 1,46 kg | 183,00 € |
| MHS-VS-WS3 | MHS-SM2200, MHS-SP 2200, MHS-SM2800, MHS-SP2800, MHS-VE1600, MHS-VT1600 | | 940 mm | 1,84 kg | 199,00 € |
| MHS-VS-WS4 | MHS-VE2200, MHS-VT2200 | | 1250 mm | 2,56 kg | 233,00 € |
| MHS-VS-WS5 | MHS-VE3200, MHS-VT3200 | | 1750 mm | 3,61 kg | 264,00 € |



** Standard color: Stainless Steel, custom made design in other RAL colors possible on demand and at a premium.

LIFT lifting unit incl. control unit (exclusively for flush ceiling mounting of HEATSCOPE® infrared heating systems)

| Art.-No. | Fitting Models | Color | Measurements | Weight | Price/Piece |
|----------|--|-----------------|-------------------|--------|-------------|
| MHS-LFT | MHS-SM2200, MHS-SP2200 MHS-SM2800, MHS-SP2800 all MHS-VE, MHS-VT | Stainless Steel | 584 x 99 x 220 mm | 4,0 kg | 1.016,00 € |



BOX built in case for ceiling recess (only in combination with HEATSCOPE® LIFT!)

| Art.-No. | Fitting Models | Color | Measurements | Weight | Price/Piece |
|----------------|--|--------------------|---------------------|---------|-------------|
| MHS-SCBL2800WT | MHS-SM2800 MHS-SP2800 | RAL9003 White** | 988 x 205 x 270 mm | 7,5 kg | 710,00 € |
| MHS-VCBL1600WT | MHS-SM2200, MHS-SP2200 MHS-VE1600, MHS-VT1600 | RAL9003 White** | 914 x 205 x 270 mm | 7,0 kg | 691,00 € |
| MHS-VCBL2200WT | MHS-VE2200 MHS-VT2200 | RAL9003 White** | 1264 x 205 x 270 mm | 10,0 kg | 843,00 € |
| MHS-VCBL3200WT | MHS-VE3200 MHS-VT3200 | RAL9003 White** | 1764 x 205 x 270 mm | 13,0 kg | 914,00 € |



** Standard color: RAL9003 White, custom made design in other RAL colors possible on demand and at a premium.

FRAME shade for ceiling recess (only in combination with HEATSCOPE® LIFT!)

| Art.-No. | Fitting Models | Color | Measurements | Weight | Price/Piece |
|---------------|--|---------------------|--------------------|--------|-------------|
| MHS-SFR2800WT | MHS-SM2800 MHS-SP2800 | RAL9003 White*** | 1030 x 281 x 25 mm | 1,6 kg | 447,00 € |
| MHS-VFR1600WT | MHS-SM2200, MHS-SP2200 MHS-VE1600, MHS-VT1600 | RAL9003 White*** | 956 x 281 x 25 mm | 1,5 kg | 427,00 € |
| MHS-VFR2200WT | MHS-VE2200 MHS-VT2200 | RAL9003 White*** | 1306 x 281 x 25 mm | 1,9 kg | 477,00 € |
| MHS-VFR3200WT | MHS-VE3200 MHS-VT3200 | RAL9003 White*** | 1806 x 281 x 25 mm | 2,5 kg | 507,00 € |



*** Standard color: RAL9003 White, custom made design in other RAL colors possible on demand and at a premium.

Mounting Brackets

| Art.-No. | Fitting Models | Color | Measurements | Weight | Price/Pair |
|--------------|--|-------|-----------------|---------|------------|
| MHS-VS-MH-TT | all MHS-SM, MHS-SP all MHS-VE, MHS-VT | titan | 95 x 63 x 12 mm | 0,06 kg | 36,00 € |
| MHS-VS-MH-WT | all MHS-SM, MHS-SP all MHS-VE, MHS-VT | white | 95 x 63 x 12 mm | 0,06 kg | 36,00 € |



oval Mounting Plate maxizes mounting area on the wall or ceiling

| Art.-No. | Fitting Models | Color | Measurements | Weight | Price/Pair |
|-----------------|--|-------|-----------------|---------|------------|
| MHS-VS-DAHDB-TT | all MHS-SM, MHS-SP all MHS-VE, MHS-VT | titan | 90 x 46 x 10 mm | 0,06 kg | 50,00 € |
| MHS-VS-DAHDB-WT | all MHS-SM, MHS-SP all MHS-VE, MHS-VT | white | 90 x 46 x 10 mm | 0,06 kg | 50,00 € |



adjustable Hinge Joints

| Art.-No. | Fitting Models | Color | Measurements | Weight | Price/Pair |
|------------------|--|-------|---------------|---------|------------|
| MHS-VS-DAHGMS-TT | all MHS-SM, MHS-SP all MHS-VE, MHS-VT | titan | 100 x Ø 24 mm | 0,11 kg | 100,00 € |
| MHS-VS-DAHGMS-WT | all MHS-SM, MHS-SP all MHS-VE, MHS-VT | white | 100 x Ø 24 mm | 0,11 kg | 100,00 € |



60 mm Fixing Rods

| Art.-No. | Fitting Models | Color | Measurements | Weight | Price/Pair |
|----------------|--|-------|--------------|---------|------------|
| MHS-VS-DAH6-TT | all MHS-SM, MHS-SP all MHS-VE, MHS-VT | titan | 60 x Ø 24 mm | 0,04 kg | 40,00 € |
| MHS-VS-DAH6-WT | all MHS-SM, MHS-SP all MHS-VE, MHS-VT | white | 60 x Ø 24 mm | 0,04 kg | 40,00 € |



100 mm Fixing Rods

| Art.-No. | Fitting Models | Color | Measurements | Weight | Price/Pair |
|-----------------|--|-------|---------------|---------|------------|
| MHS-VS-DAH10-TT | all MHS-SM, MHS-SP all MHS-VE, MHS-VT | titan | 100 x Ø 24 mm | 0,06 kg | 50,00 € |
| MHS-VS-DAH10-WT | all MHS-SM, MHS-SP all MHS-VE, MHS-VT | white | 100 x Ø 24 mm | 0,06 kg | 50,00 € |



300 mm Fixing Rods

| Art.-No. | Fitting Models | Color | Measurements | Weight | Price/Pair |
|-----------------|--|-------|---------------|---------|------------|
| MHS-VS-DAH30-TT | all MHS-SM, MHS-SP all MHS-VE, MHS-VT | titan | 300 x Ø 24 mm | 0,19 kg | 81,00 € |
| MHS-VS-DAH30-WT | all MHS-SM, MHS-SP all MHS-VE, MHS-VT | white | 300 x Ø 24 mm | 0,19 kg | 81,00 € |



500 mm Fixing Rods

| Art.-No. | Fitting Models | Color | Measurements | Weight | Price/Pair |
|-----------------|--|-------|---------------|---------|------------|
| MHS-VS-DAH50-TT | all MHS-SM, MHS-SP all MHS-VE, MHS-VT | titan | 500 x Ø 24 mm | 0,29 kg | 107,00 € |
| MHS-VS-DAH50-WT | all MHS-SM, MHS-SP all MHS-VE, MHS-VT | white | 500 x Ø 24 mm | 0,29 kg | 107,00 € |

